



## REGIONAL SPECIALISED METEOROLOGICAL CENTRE -TROPICAL CYCLONES, NEW DELHI TROPICAL WEATHER OUTLOOK

DEMS-RSMC TROPICAL CYCLONES NEW DELHI DATED 16.07.2025

**TROPICAL WEATHER OUTLOOK FOR THE NORTH INDIAN OCEAN (THE BAY OF BENGAL AND THE ARABIAN SEA) VALID FOR THE NEXT 168 HOURS ISSUED AT 0600 UTC OF 16.07.2025 BASED ON 0300 UTC OF 16.07.2025.**

### LAND:

#### (A) Well-marked low-pressure area over southwest Bihar and adjoining east Uttar Pradesh

The well-marked low-pressure area over southwest Bihar and adjoining east Uttar Pradesh persisted over the same region at 0300 UTC of today, the 16<sup>th</sup> July 2025. The associated cyclonic circulation extends upto 7.6 km above mean sea level tilting southwestward with height. It is likely to move west-northwestwards across southwest Bihar and east Uttar Pradesh during next 24 hours.

As per INSAT 3D Imagery, scattered to broken low & medium clouds with embedded intense to very intense convection over southeast Uttar Pradesh, East Madhya Pradesh, Chhattisgarh, Bihar, Jharkhand, Orissa, Gangetic West Bengal, Sub-Himalayan West Bengal (minimum Cloud Top Temperature -70°C to -90°C).

#### (B) Well-marked low-pressure area over northwest Rajasthan

Well-marked low-pressure area over northwest Rajasthan persisted over the same region at 0300 UTC of today, the 16<sup>th</sup> July, 2025. The associated cyclonic circulation extends upto 5.8km above mean sea level. It is likely to move slowly north-northwestwards and weaken into a low-pressure area during next 12 hours.

As per INSAT 3D Imagery, Scattered to Broken low & medium clouds with embedded intense to very intense convection over north Pakistan (minimum Cloud Top Temperature -70°C to -90°C) and moderate to intense convection over Jammu & Kashmir, Punjab, Northwest Rajasthan (minimum Cloud Top Temperature -50°C to -70°C).

### BAY OF BENGAL:

Scattered to broken low and medium clouds with embedded intense to very intense convection lay over south adjoining central Bay of Bengal, Andaman Sea. Scattered low and medium clouds with embedded isolated moderate to intense convection lay over rest of Bay of Bengal.

### \*PROBABILITY OF CYCLOGENESIS (FORMATION OF DEPRESSION) DURING NEXT 168 HRS:

24 HOURS	24-48 HOURS	48-72 HOURS	72-96 HOURS	96-120 HOURS	120-144 HOURS	144-168 HOURS
NIL	NIL	NIL	NIL	NIL	NIL	NIL

\*NOTE: EVERY 24HR FORECAST IS VALID UPTO 0300 UTC (0830 IST) OF NEXT DAY

### ARABIAN SEA:

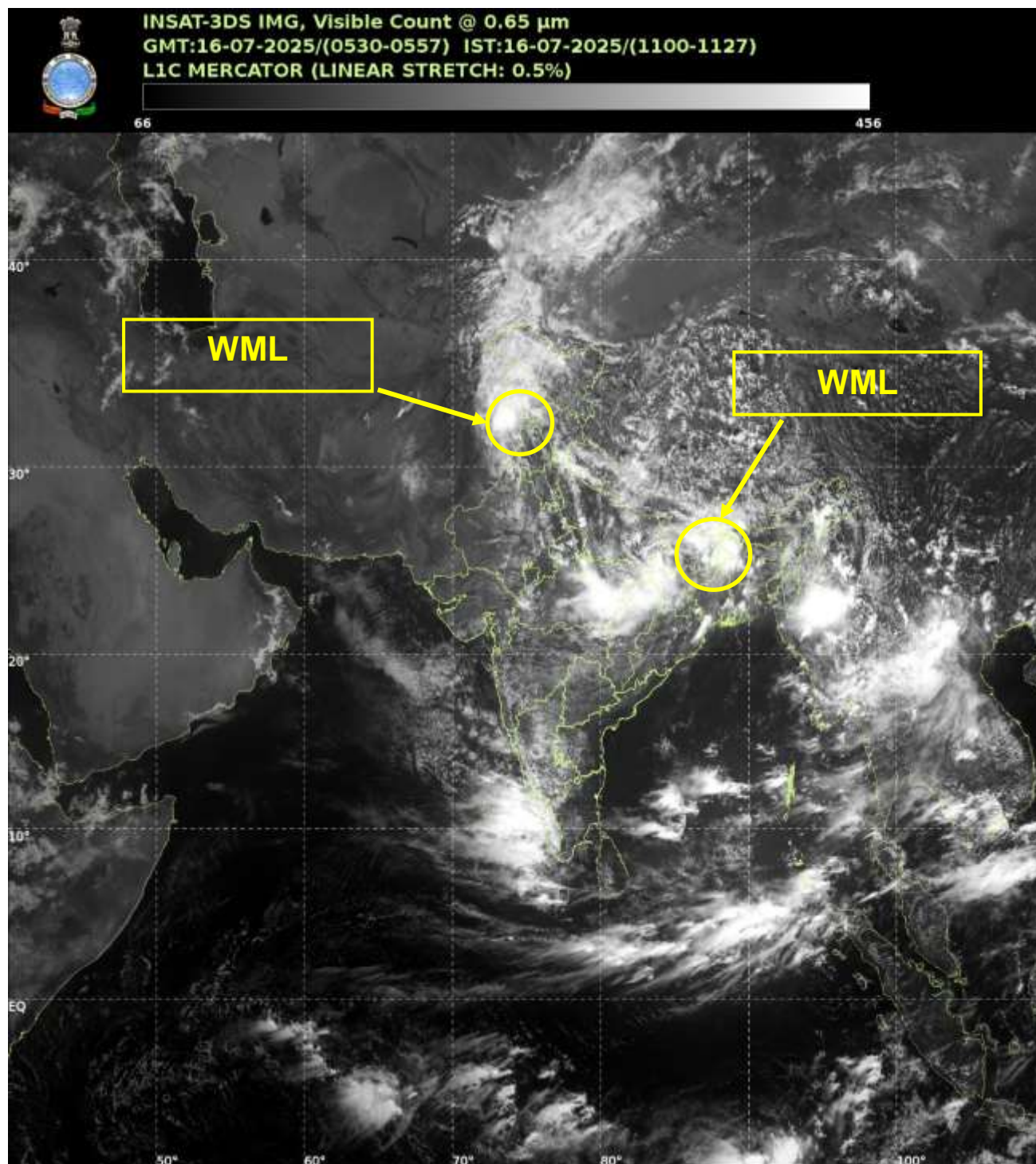
Scattered to broken low and medium clouds with embedded intense to very intense convection lay over southeast adjoining eastcentral Arabian Sea, Lakshadweep Islands area, Maldives & Comorin area. Scattered low and medium clouds with embedded isolated weak to moderate convection lay over rest of Arabian Sea.

**\*PROBABILITY OF CYCLOGENESIS (FORMATION OF DEPRESSION) DURING NEXT 168 HRS:**

24 HOURS	24-48 HOURS	48-72 HOURS	72-96 HOURS	96-120 HOURS	120-144 HOURS	144-168 HOURS
NIL	NIL	NIL	NIL	NIL	NIL	NIL

**\*NOTE: EVERY 24HR FORECAST IS VALID UPTO 0300 UTC (0830 IST) OF NEXT DAY**

**REMARKS:** NIL



WML – Well Marked Low Pressure Area